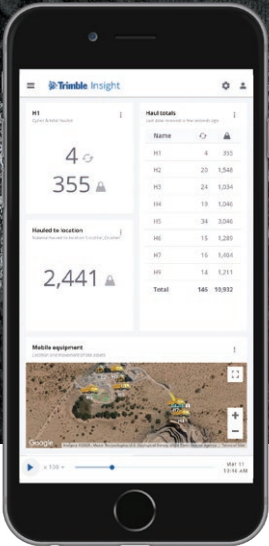




Truck #54

Loads today:	19
Tons today:	640.3 t
Average payload:	33.7 t
Downtime:	02:11:44
Average cycle time:	00:10:19
Miles today:	38.1
Peak speed:	22.1 mph
Average speed:	19.5 mph

Optimize load/haul operations



# Trimble Smart Haul



# Optimize Load/Haul

Load/haul operations represent real opportunities to improve material moved per shift, lower cost per ton moved and accelerate mass haul operations.

With Trimble Smart Haul, you can track productivity and progress of load/haul operations to ensure you are on target to achieve your goals.

Trimble Smart Haul combines payload data from the excavator scale with haul fleet monitoring and cloud reporting to identify opportunities to move material with greater speed and efficiency.

The system is almost completely automated with only minimal interaction from the excavator operator. Payload is automatically assigned to each truck, and GPS tracking monitors truck movements, so operators can focus on other tasks and you can trust data accuracy.

## BENEFITS

- ▶ Real-time visibility of load and haul operations from the site or office
- ▶ Accurate and detailed automatic data collection, not reliant on operators
- ▶ Maximize mobile fleet utilization with run-time and operation delay tracking
- ▶ Identify bottlenecks affecting progress and production
- ▶ Optimized truck loading efficiency
- ▶ Identify over or under-trucking and match to processing demand
- ▶ Mixed-fleet support to centralize production data in one location
- ▶ Clear cycle time and stoppage analysis for each haul road section
- ▶ Material movement traceability to reduce cross-product contamination

## REDUCE WASTE

- ▶ Under and over-loading
- ▶ Truck queuing (line-ups)
- ▶ Slow or inconsistent cycle times
- ▶ Truck rollover
- ▶ Excessive tire wear

## FASTER AND MORE CONSISTENT CYCLES

Load and Haul Cycle



Optimized with Trimble Smart Haul

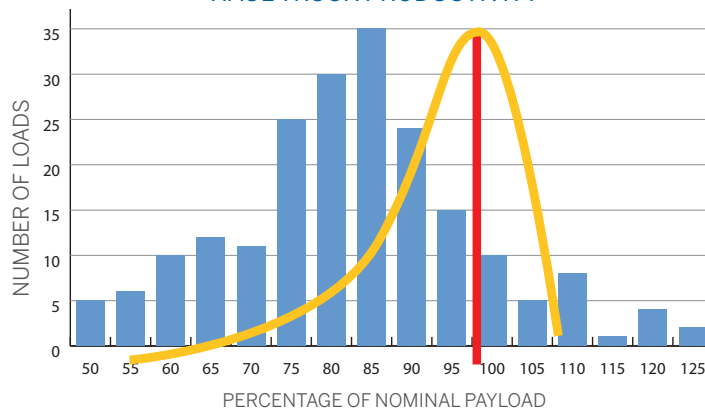


## HIGHER PRODUCTION

Trimble Smart Haul systems provide accurate haul totals removing the need for tally sheets and production estimates. Reports help to highlight inefficient material movements. It is also a powerful tool for tracking sub-contractor progress with accurate, real-time, electronic data providing a single source of the truth.

Take control of your payload variance, with accurate loadout. Trimble Smart Haul helps prevent overloading, and reduces underloading, to optimize every truck and maximize total production by increasing tons per shift.

HAUL TRUCK PRODUCTIVITY



■ Before  
■ With Trimble Smart Haul

[illegible]

The screenshot shows the Google Earth interface. On the left, a table titled 'Heat counts' displays data for various locations. The table has columns for 'Name', 'Count', and 'Value'. The data is as follows:

Name	Count	Value
H01	4	355
H02	39	3,003
H03	54	2,443
H04	60	2,130
H05	71	6,427
H06	37	3,314
H07	38	3,185
H09	34	3,026
<b>Total</b>	<b>317</b>	<b>24,086</b>

Below the table, a section titled 'Heatmap by location' shows a 3D visualization of a rhinoceros. The rhinoceros is shown in a desert environment. Yellow lines and dots indicate the locations of the heat counts. The dots are labeled with the location names (H01, H02, H03, H04, H05, H06, H07, H09) and their corresponding values. The rhinoceros is shown in a 3D perspective, with its head and body visible. The background is a desert landscape with some trees and a clear sky.

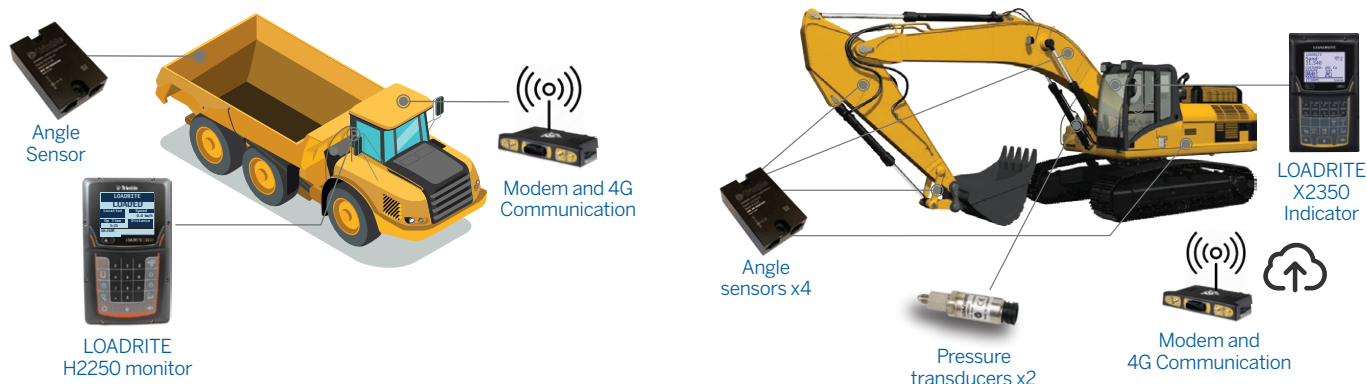
The screenshot shows the mobile app interface for the 'Mars 2020' mission. At the top, the mission name 'Mars 2020' is displayed with a blue checkmark. Below this, there is a large '4' with a checkmark and a '355' with a checkmark. A button labeled 'Hatched to launch' is visible. A large '2,441' with a checkmark is shown. The 'Ready to launch' section features a satellite image of the Mars surface with yellow markers and a 'Launch' button. The bottom navigation bar includes icons for Home, Search, and a profile icon.



# How It Works

Payload is measured on the excavator scale and logged as a loading event. Likewise, the haul truck logs the load and dump event and the two events are synchronized in 'InsightHQ' web portal to provide accurate, time-stamped productivity monitoring.

## SYSTEM COMPONENTS



# Trimble: Transforming the Way the World Works

Trimble® helps increase site profitability, maximize productivity, improve operational efficiency and get control of your inventory. Trimble has a range of LOADRITE loader scales, excavator scales, conveyor belt scales, payload reporting, tractor scales, forklift scales and refuse truck scales.

Learn more at [loadritescales.com](https://loadritescales.com)



### YOUR LOCAL DEALER



<https://knrgroup.com/>



### K&R Weigh Systems

Covering FL, GA, SC and NC

Since 1993

USA

(800) 910-2885

[info@knrgroup.com](mailto:info@knrgroup.com)

### Trimble, Inc (Auckland office)

45 Patiki Road, Avondale, Auckland 1026

New Zealand

Tel: +64 9 820 7720

[info@loadritescales.com](mailto:info@loadritescales.com)

[www.loadritescales.com](https://www.loadritescales.com)

